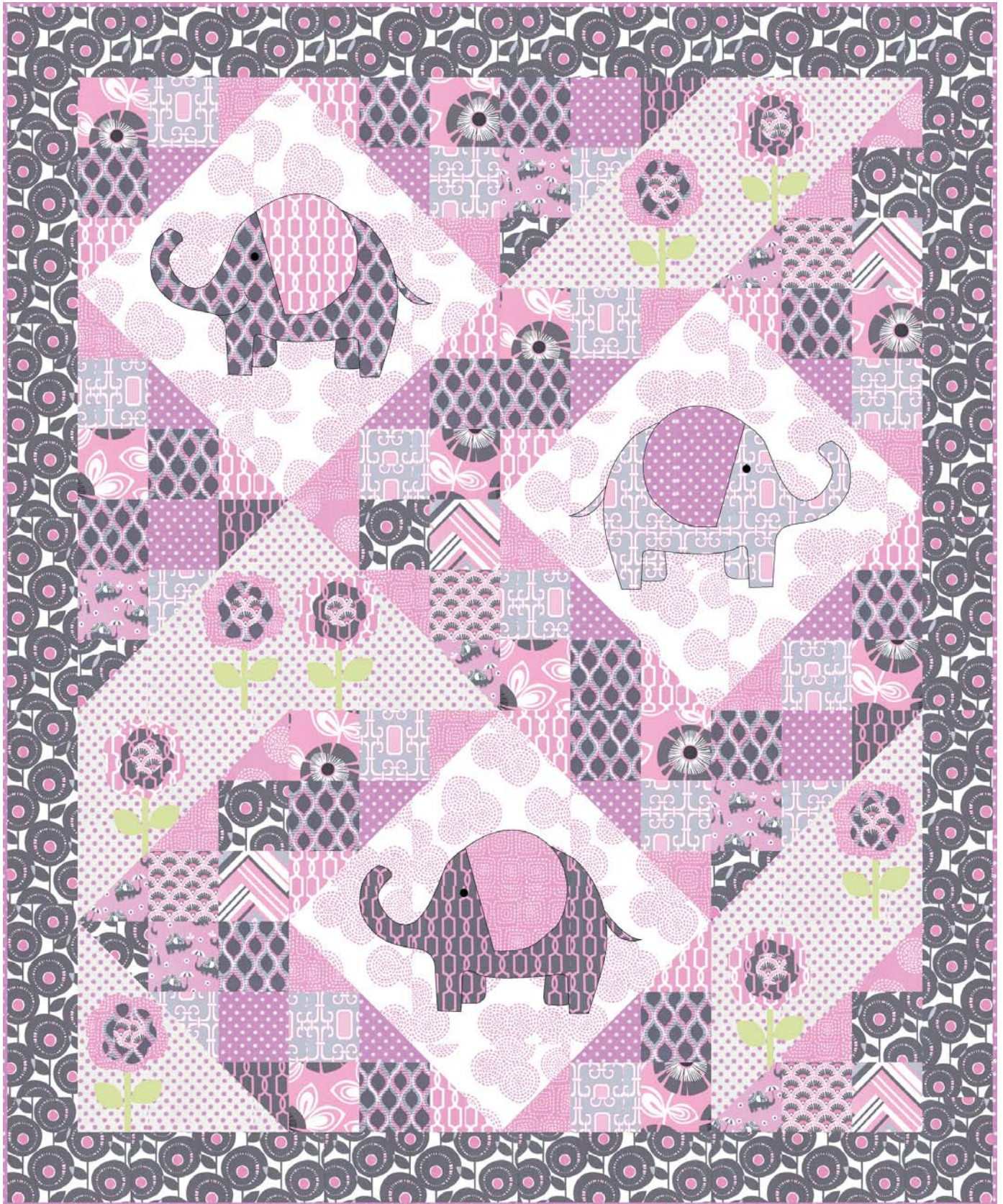


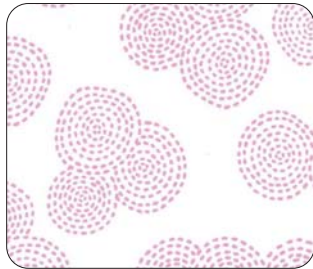
Elephant Pop



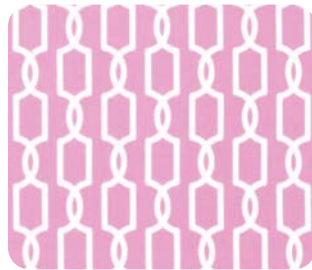


FABRIC REQUIREMENTS

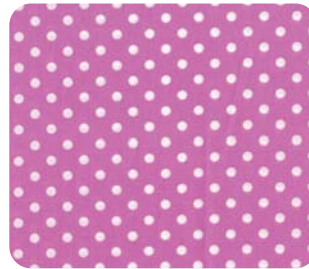
Backing & Batting: 60" x 72"



CX5946 Peony
Stitch Circle
7/8 yard



CX6019 Orchid
Trelliage
1/3 yard



CX2490 Orchid
Dumb Dot
1 yard



CX5944 Orchid
Stitch Square
1/3 yard



DC5905 Orchid
Lauren
1/2 yard



CX6261 Orchid
Ariel
3/4 yard



CX6259 Orchid
Regina
1/4 yard



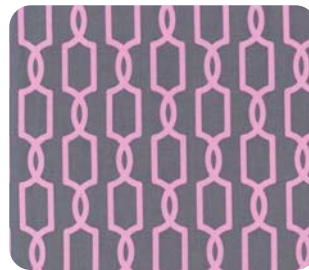
CX2490 Peony
Dumb Dot
7/8 yard



CX6260 Orchid
Aretha
1 & 1/8 yards



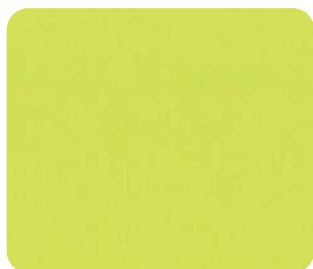
CX6288 Orchid
Water for Elephants
1/4 yard



CX6019 Peony
Trelliage
3/4 yard



CX6262 Orchid
Fannie
1/4 yard



SC5333-Limeade
Cotton Couture
1/4 yard



CX5946 Orchid
Stitch Circle
1/4 yard



CX6263 Orchid
Virginia
1/4 yard



CX6258 Orchid
Libby
4 yards

"Elephant Pop" featuring Pastel Pop

Quilt by Heidi Pridemore

Size: Approximately 56" x 68" Skill Level: Advanced Beginner

Materials

Cutting instructions

Please Note: All strips are cut across the width of fabric (WOF) from selvage to selvage edge.

	Fabric	Yardage	Cutting
(A)	CX5946 Stitched Circle - Peony	$\frac{7}{8}$ yard	<ul style="list-style-type: none"> • Cut two 12 $\frac{7}{8}$" x WOF strips. Sub-cut the strips into six 12 $\frac{7}{8}$" squares. Cut the squares across one diagonal to make twelve large triangles.
(B)	CX6019 Trelliage - Orchid	$\frac{1}{3}$ yard	<ul style="list-style-type: none"> • Cut one 4 $\frac{7}{8}$" x WOF strip. Sub-cut the strip into six 4 $\frac{7}{8}$" squares. Cut the squares across one diagonal to make twelve small triangles. • See instructions to cut one elephant ear. • See instructions to cut four large flowers.
(C)	CX2490 Dumb Dot - Orchid	1 yard	<ul style="list-style-type: none"> • Cut one 4 $\frac{7}{8}$" x WOF strip. Sub-cut the strip into six 4 $\frac{7}{8}$" squares. Cut the squares across one diagonal to make twelve small triangles. • Cut one 4 $\frac{1}{2}$" x WOF strip. Sub-cut the strip into four 4 $\frac{1}{2}$" squares. • See instructions to cut one elephant ear. • Cut seven 4 $\frac{1}{2}$" x WOF strips for binding.
(D)	CX5944 Stitched Square - Orchid	$\frac{1}{3}$ yard	<ul style="list-style-type: none"> • Cut one 4 $\frac{7}{8}$" x WOF strip. Sub-cut the strip into eight 4 $\frac{7}{8}$" squares. Cut the squares across one diagonal to make sixteen small triangles. • See instructions to cut four large flowers. • See instructions to cut one elephant ear.
(E)	DC5905 Lauren - Orchid	$\frac{1}{2}$ yard	<ul style="list-style-type: none"> • Cut one 4 $\frac{7}{8}$" x WOF strip. Sub-cut the strip into two 4 $\frac{7}{8}$" squares. Cut the squares across one diagonal to make four small triangles. • Cut two 4 $\frac{1}{2}$" x WOF strips. Sub-cut the strips into twelve 4 $\frac{1}{2}$" squares. • See instructions to cut one elephant and two elephant legs and one tail.
(F)	CX6261 Ariel - Orchid	$\frac{3}{4}$ yards	<ul style="list-style-type: none"> • Cut two 4 $\frac{1}{2}$" x WOF strips. Sub-cut the strips into sixteen 4 $\frac{1}{2}$" squares. • See instructions to cut one elephant and two elephant legs and one tail. • See instructions to cut four medium flowers.
(G)	CX6259 Regina - Orchid	$\frac{1}{4}$ yard	<ul style="list-style-type: none"> • Cut two 4 $\frac{1}{2}$" x WOF strips. Sub-cut the strips into twelve 4 $\frac{1}{2}$" squares.
(H)	CX2490 Dumb Dot - Peony	$\frac{7}{8}$ yard	<ul style="list-style-type: none"> • Cut two 12 $\frac{7}{8}$" x WOF strips. Sub-cut the strips into four 12 $\frac{7}{8}$" squares. Cut the squares across one diagonal to make eight large triangles.

Materials - Continued

Cutting instructions

Please Note: All strips are cut across the width of fabric (WOF) from selvage to selvage edge.

	Fabric	Yardage	Cutting
(I)	CX6260 Aretha - Orchid	1 $\frac{1}{8}$ yards	<ul style="list-style-type: none"> • Cut one 4 $\frac{7}{8}$" x WOF strip. Sub-cut the strip into two 4 $\frac{7}{8}$" squares and four 4 $\frac{1}{2}$" squares. Cut the two 4 $\frac{7}{8}$" squares across one diagonal to make four small triangles. • Cut four 4 $\frac{1}{2}$" x WOF strips. Sew the strips together, end to end, and cut two 4 $\frac{1}{2}$" x 60 $\frac{1}{2}$" strips. • Cut three 4 $\frac{1}{2}$" x WOF strips. Sew the strips together, end to end, and cut two 4 $\frac{1}{2}$" x 56 $\frac{1}{2}$" strips.
(J)	CX6288 Water For Elephants - Orchid	$\frac{1}{4}$ yard	<ul style="list-style-type: none"> • Cut one 4 $\frac{7}{8}$" x WOF strip. Sub-cut the strip into two 4 $\frac{7}{8}$" squares and four 4 $\frac{1}{2}$" squares. Cut the two 4 $\frac{7}{8}$" squares across one diagonal to make four small triangles.
(K)	CX6019 Trelliage - Peony	$\frac{3}{4}$ yard	<ul style="list-style-type: none"> • Cut one 4 $\frac{7}{8}$" x WOF strip. Sub-cut the strip into two 4 $\frac{7}{8}$" squares. Cut the squares across one diagonal to make four small triangles. • See instructions to cut one elephant and two elephant legs and one tail. • See instructions to cut four medium flowers.
(L)	CX6262 Fannie - Orchid	$\frac{1}{4}$ yard	<ul style="list-style-type: none"> • Cut one 4 $\frac{1}{2}$" x WOF strip. Sub-cut the strip into four 4 $\frac{1}{2}$" squares. • See instructions to cut eight flower centers.
(M)	SC5333 Cotton Couture - Limeade	$\frac{1}{4}$ yard	<ul style="list-style-type: none"> • See instructions to cut eight stems. • See instructions to cut sixteen leaves.
(N)	CX5946 Stitched Circle - Orchid	$\frac{1}{4}$ yard	<ul style="list-style-type: none"> • Cut one 4 $\frac{7}{8}$" x WOF strip. Sub-cut the strip into two 4 $\frac{7}{8}$" squares. Cut the squares across one diagonal to make four small triangles.
(O)	CX6263 Virginia - Orchid	$\frac{1}{4}$ yard	<ul style="list-style-type: none"> • Cut one 4 $\frac{1}{2}$" x WOF strip. Sub-cut the strip into four 4 $\frac{1}{2}$" squares.
Backing	CX6258 Libby - Orchid	3 $\frac{3}{4}$ yards	<ul style="list-style-type: none"> • Cut two 64" x WOF strips. Piece the strips together and trim to make the 64" x 76" pieced backing.

You will also need:

- 64" x 76" batting, fusible web, (3) $\frac{1}{4}$ " black buttons, threads to match, scissors, straight pins, acrylic ruler, rotary cutter and mat.

Disclaimers

This pattern is provided as a courtesy to quilt stores, catalogs and quilters. Michael Miller Fabrics, LLC is not responsible for the accuracy of any kits packaged to accompany this pattern. Please direct any inquiries to the kit maker.

Yardage requirements for this pattern may allow for excess yardage to accommodate specific placement of motifs or to allow for any fussy-cutting to achieve the finished quilt design.

While every attempt has been made to give accurate measurements, yardage requirements and construction directions; this does not allow personal variations in measuring, cutting or sewing. The enclosed directions were used in the construction of the original quilt.

Blocks Assembly

1. Follow Figure 1 to sew together one Fabric B small triangle, one Fabric C small triangle, one small Fabric D small triangle, one 4 1/2" Fabric F square, one 4 1/2" Fabric E square, one 4 1/2" Fabric G square and one Fabric A large triangle to make one Block One Unit.
2. Repeat Step 1 to make four 12 1/2" Block One units total.
3. Follow Figure 2 to sew together four Block One units to make one 24 1/2" Block One square. Repeat to make three Block One squares.
4. Follow Figure 3 to sew together one Fabric I small triangle, one Fabric E small triangle, one small Fabric K small triangle, one 4 1/2" Fabric J square, one 4 1/2" Fabric C square, one 4 1/2" Fabric F square and one Fabric H large triangle to make one Block Two square.
5. Repeat Step 4 to make four 12 1/2" Block Two squares total.
6. Follow Figure 4 to sew together one Fabric J small triangle, one Fabric D small triangle, one small Fabric N small triangle, one 4 1/2" Fabric L square, one 4 1/2" Fabric I square, one 4 1/2" Fabric O square and one Fabric H large triangle to make one Block Three square.
7. Repeat Step 6 to make four 12 1/2" Block Three squares total.

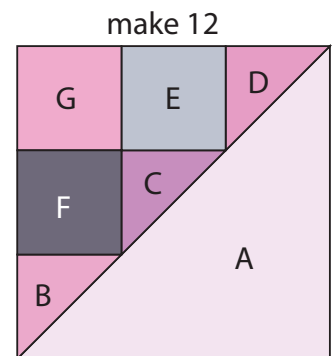


Fig. 1

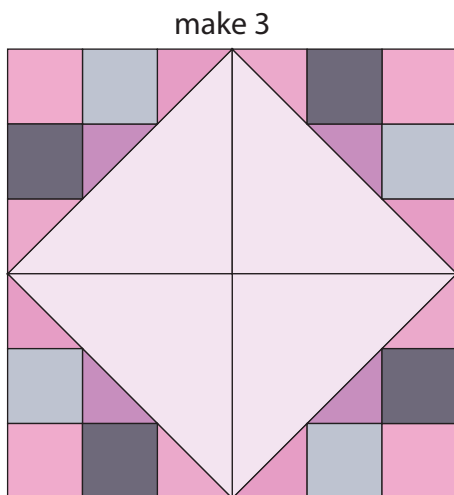


Fig. 2

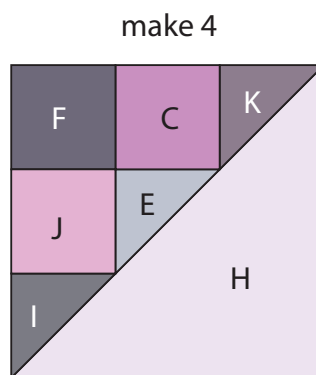


Fig. 3

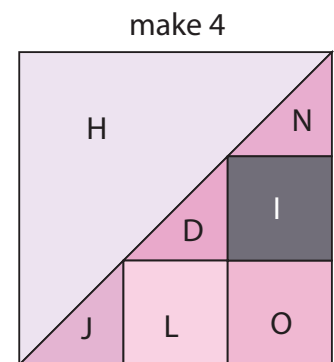


Fig. 4

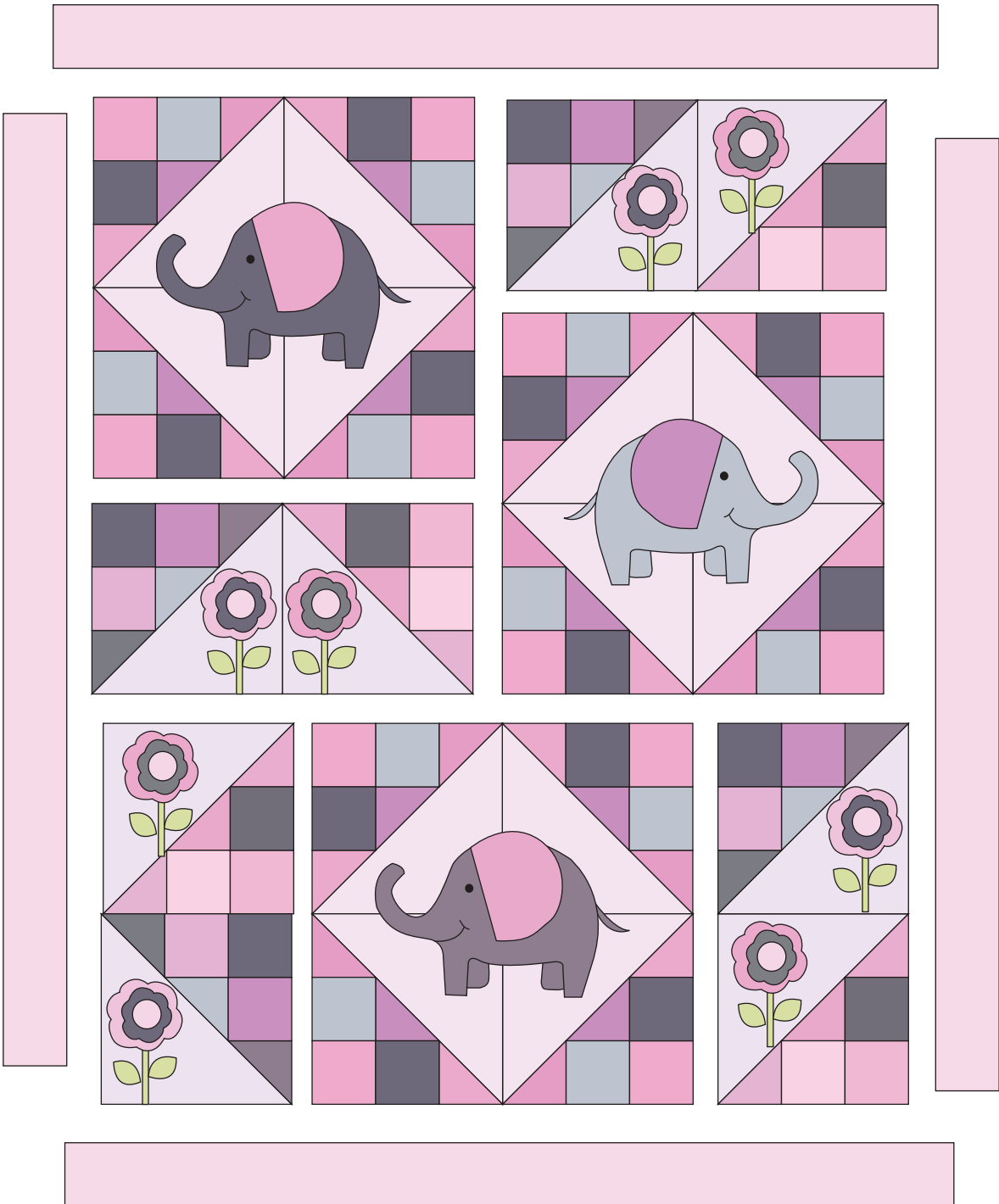
Applique

8. Following the manufacturer's instructions, trace the listed number of each template onto the paper side of the fusible web. Roughly cut out each template about 1/8" outside the drawn lines.
9. Press each template onto the wrong side of the fabrics as listed on the templates. Cut out each template on the drawn lines.
10. Refer to the quilt photo to arrange and press the elephant, elephant legs, elephant tail and elephant ear onto one Block One square. Repeat with the other two Block One squares to make three Elephant blocks.
11. Refer to the quilt photo to arrange and press the four Fabric D large flowers, four Fabric F medium flowers, four Fabric L flower centers, eight leaves and four stems onto the four Block Two squares. Be sure to follow the quilt layout for the correct orientation of the flowers.
12. Refer to the quilt photo to arrange and press the four Fabric B large flowers, four Fabric K medium flowers, four Fabric L flower centers, eight leaves and four stems onto the four Block Three squares. Be sure to follow the quilt layout for the correct orientation of the flowers.
13. Finish the raw edges of each shape with a decorative stitch such as a buttonhole or satin stitch to complete the three Elephant blocks, four Flower One blocks and four Flower Two blocks.

Quilt Top Assembly

(Follow Quilt Layout while assembling the quilt top.)

14. Refer to the quilt layout to sew the blocks together to make the quilt top.
15. Sew one 4 1/2" x 60 1/2" Fabric I strip to each side of the quilt top. Sew one 4 1/2" x 56 1/2" Fabric I strip to the top and bottom of the quilt top.
16. Layer and quilt as desired.
17. Sew the seven 2 1/2" x WOF Fabric C strips together, end-to-end with 45° seams, to make the binding. Fold this long strip in half lengthwise with wrong sides together and press
18. Bind as desired.
19. Sew the buttons on the elephants for eyes.

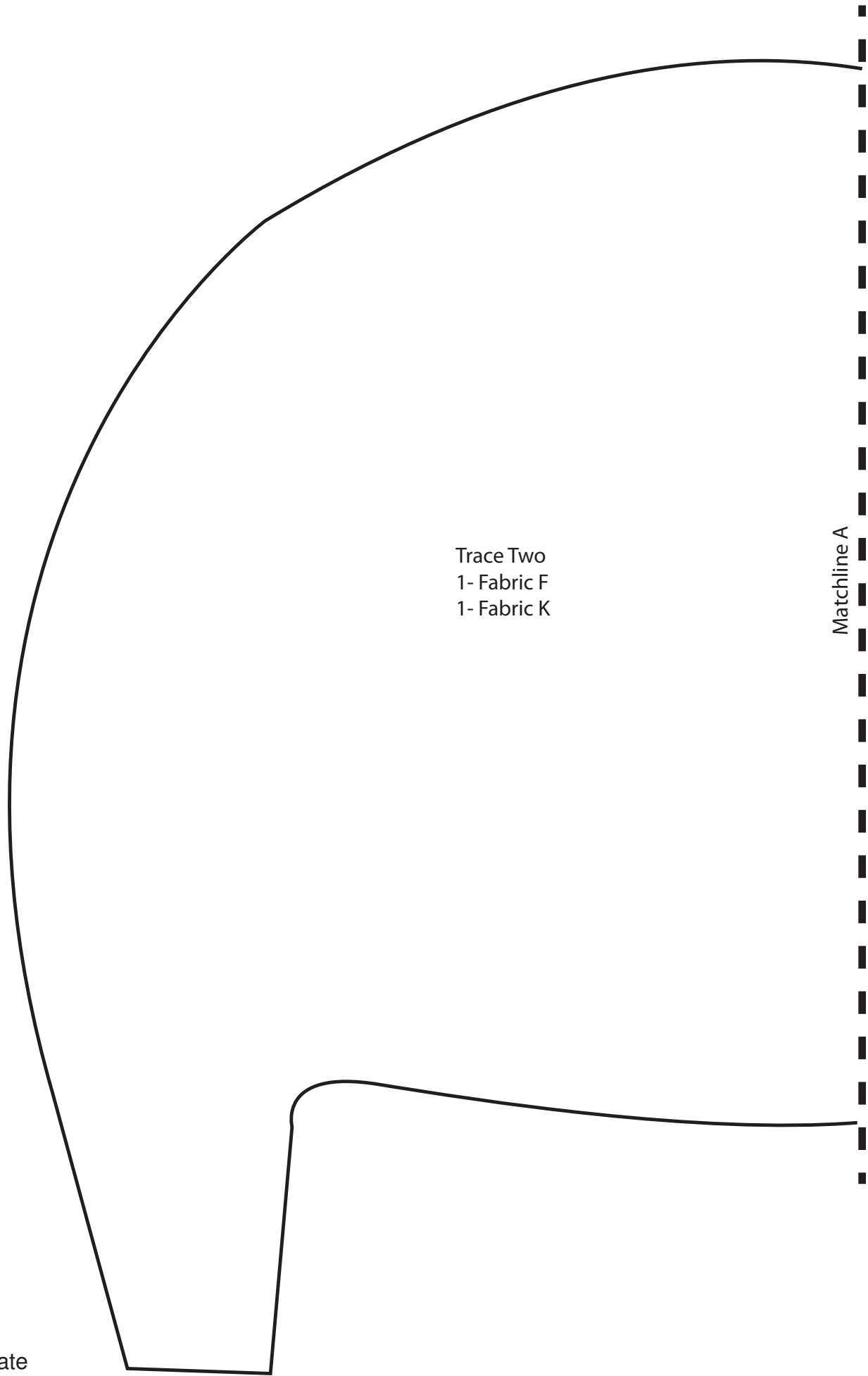


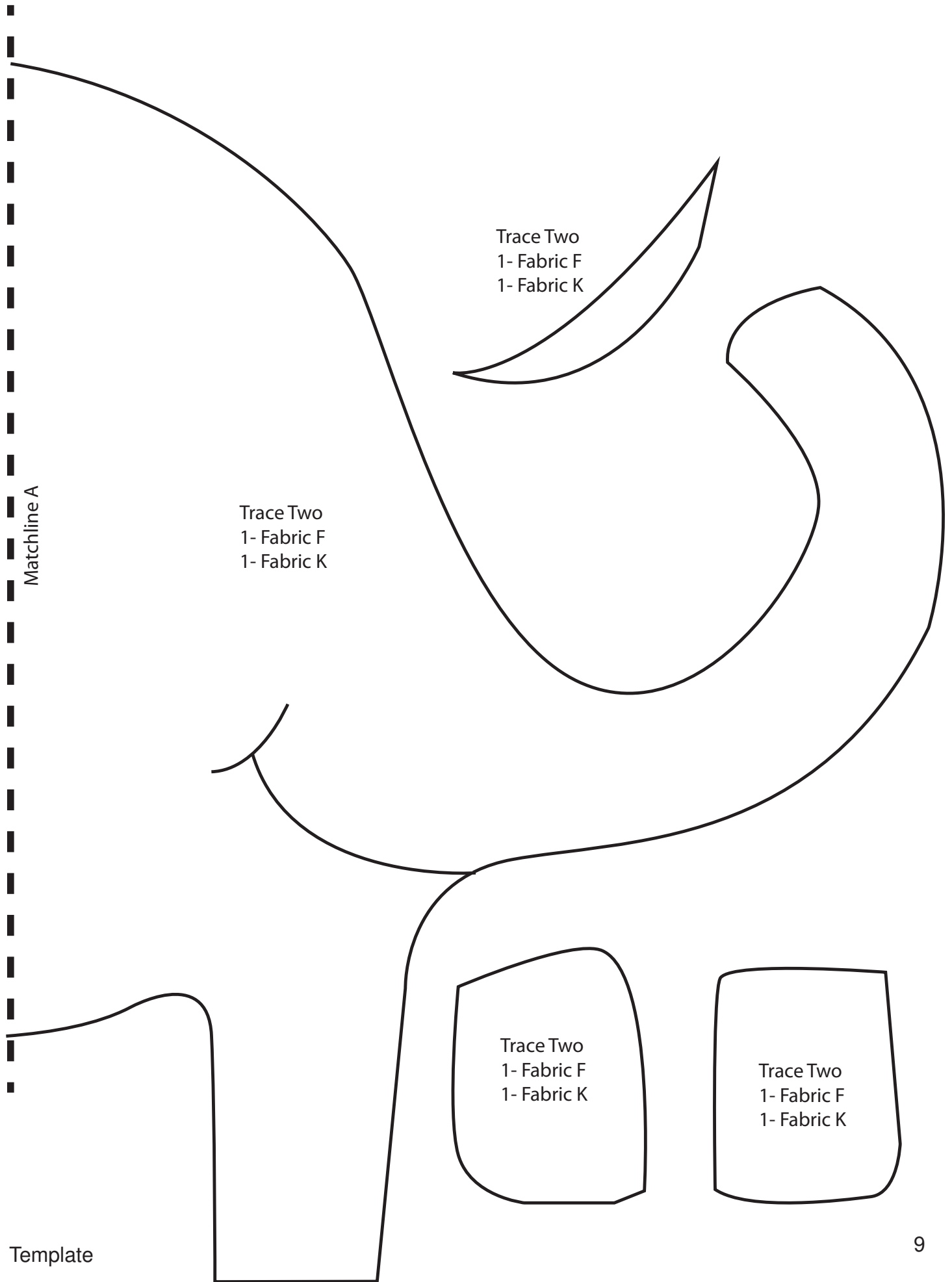
Quilt Layout

Trace Two
1- Fabric F
1- Fabric K

Matchline A

Template



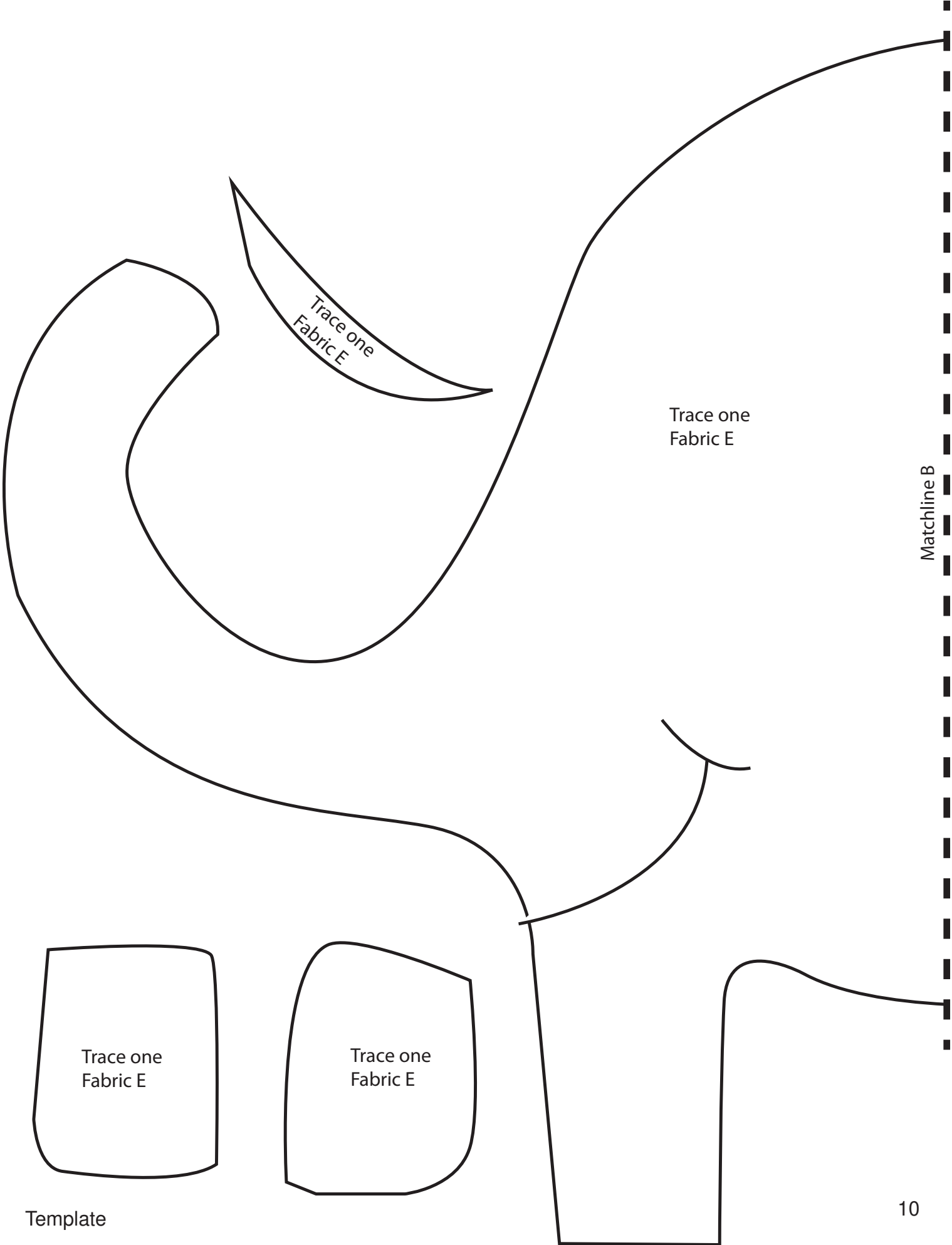


Trace Two
1- Fabric F
1- Fabric K

Trace Two
1- Fabric F
1- Fabric K

Trace Two
1- Fabric F
1- Fabric K

Trace Two
1- Fabric F
1- Fabric K



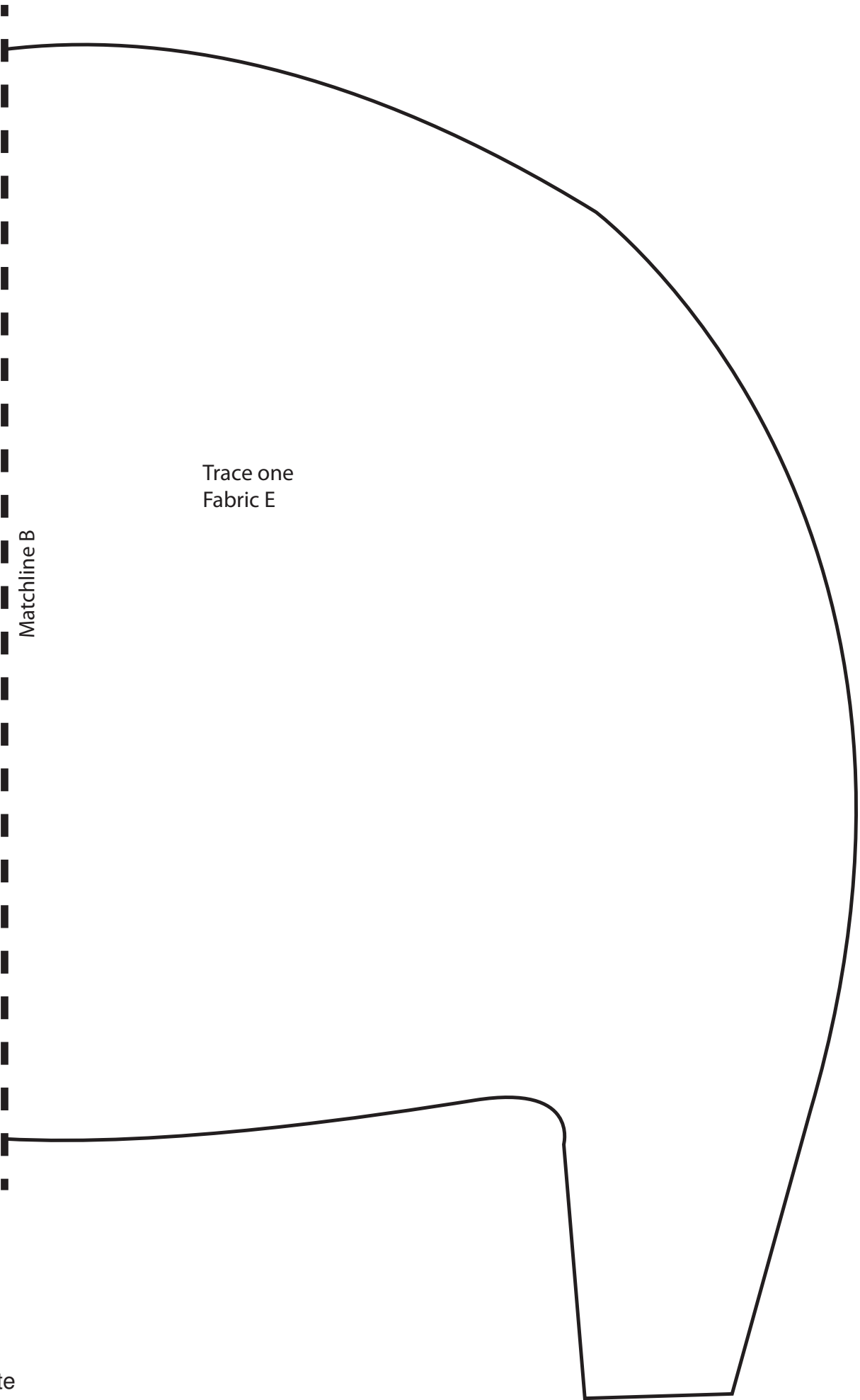
Trace one
Fabric E

Trace one
Fabric E

Matchline B

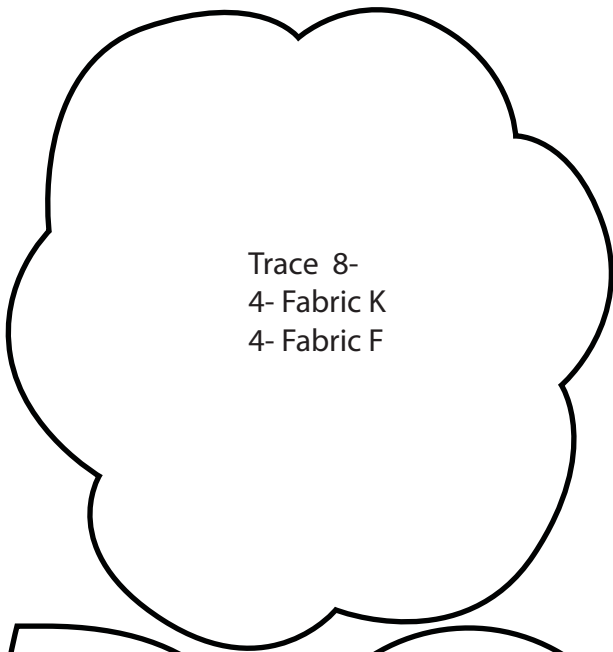
Trace one
Fabric E

Trace one
Fabric E

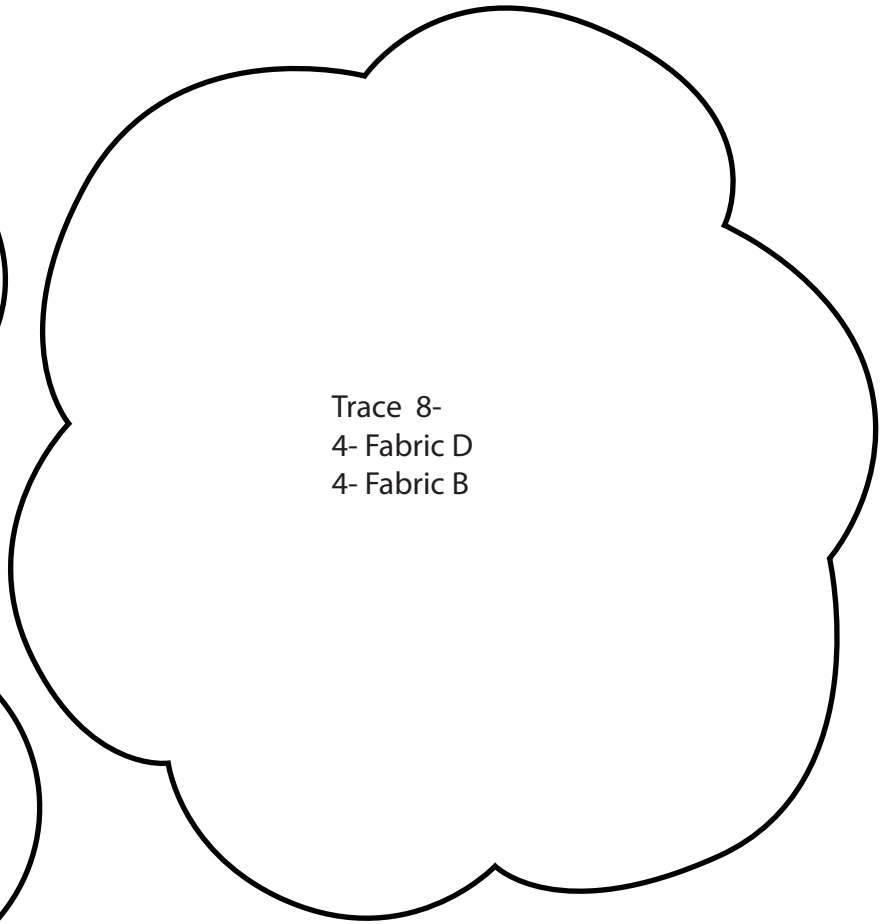


Trace one
Fabric E

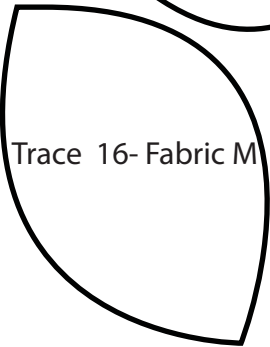
Matchline B



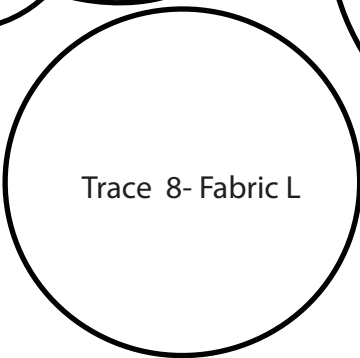
Trace 8-
4- Fabric K
4- Fabric F



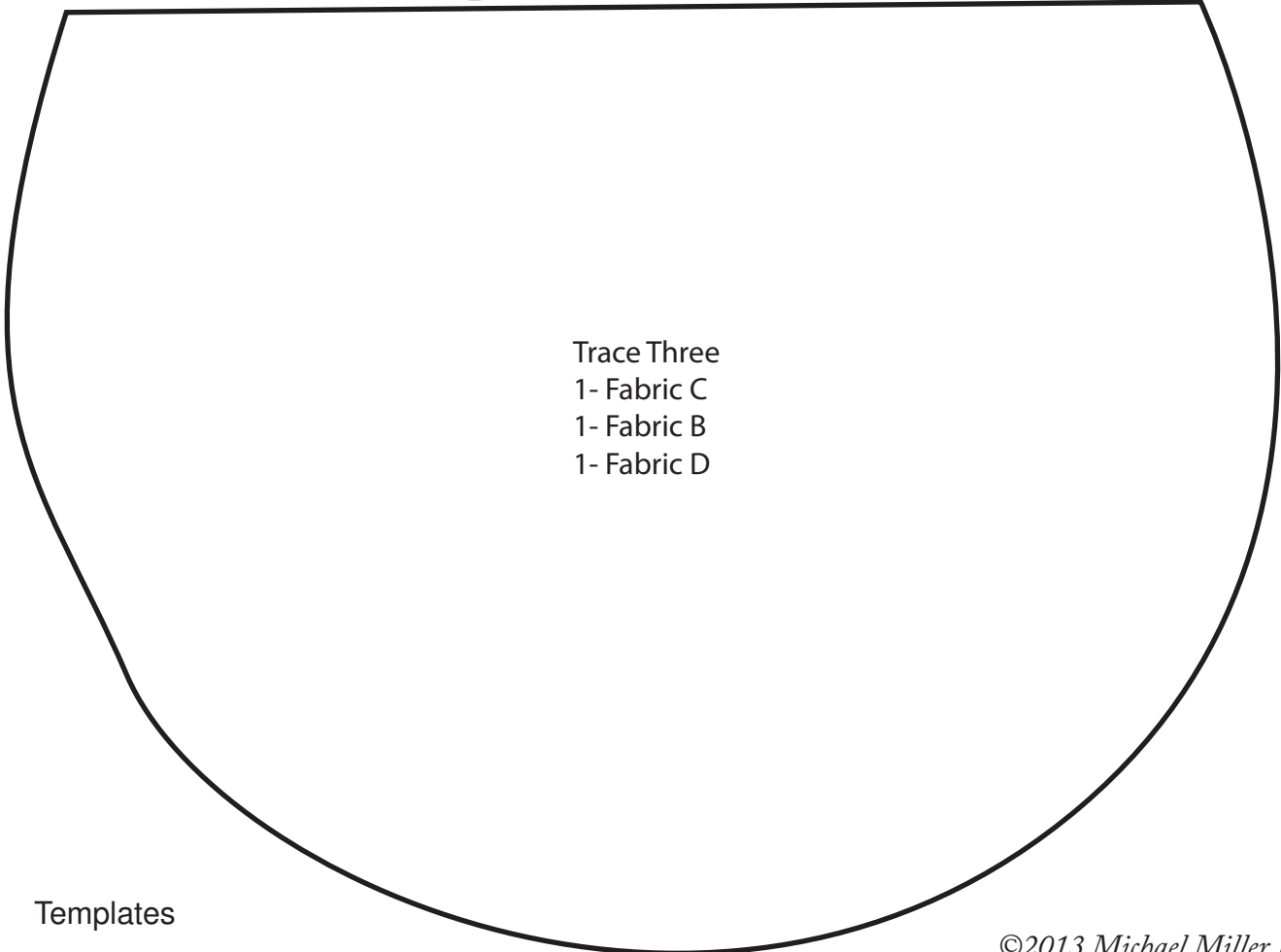
Trace 8-
4- Fabric D
4- Fabric B



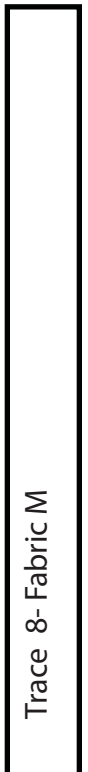
Trace 16- Fabric M



Trace 8- Fabric L



Trace Three
1- Fabric C
1- Fabric B
1- Fabric D



Trace 8- Fabric M