

Layer Cake Lattice Quilt Pattern

Shortcut Pattern



Finished Size: 48" x 67"

Fabric Requirements

- One Valley Layer Cake or thirty-five 10" print squares
- 1 1/3 yards solid (9900-281)
- 5/8 yard binding (37515-27)
- 4 1/3 yards backing (37510-11)

Cutting

- Cut each 10" print square into:
 - 1 - 4 1/2" x 10" rectangle - 35 total (Fabric A)
 - 1 - 4 1/2" x 6 1/2" rectangle - 35 total (Fabric B)
- Cut solid fabric into:
 - 70 - 3 1/4" x 6 1/2" rectangles (Fabric C)
- Cut binding fabric into:
 - 7 - 2 1/2" x width of fabric strips (Fabric D)

Check out our
YouTube tutorial



1-866-826-2069
www.FatQuarterShop.com
www.YouTube.com/FatQuarterShop

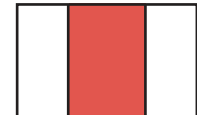
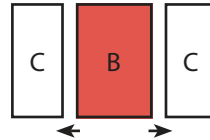
Block Assembly

Use 1/4" seams and press as arrows indicate throughout.

Assemble two Fabric C rectangles and one Fabric B rectangle.

Lattice Strip Set should measure 6 1/2" x 10".

Make thirty-five.

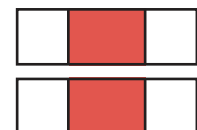
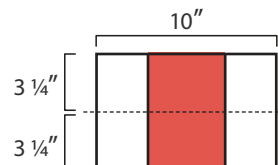


Make thirty-five.

Cut the Lattice Strip Set in half across the width.

Side Lattice Unit should measure 3 1/4" x 10".

Make seventy.

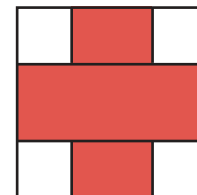
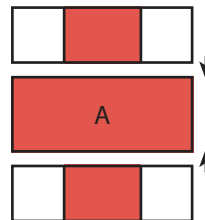


Make seventy.

Assemble two matching Side Lattice Units and one matching Fabric A rectangle.

Lattice Block should measure 10" x 10".

Make thirty-five.



Make thirty-five.

Layer Cake Lattice Quilt Pattern

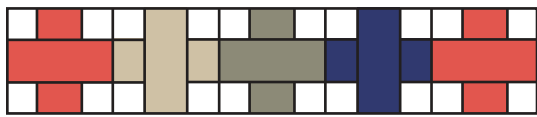
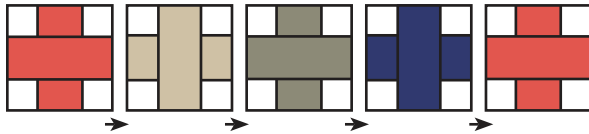
Quilt Rows

Assemble five Lattice Blocks.

Pay close attention to block placement.

Lattice Row One should measure 10" x 48".

Make four.



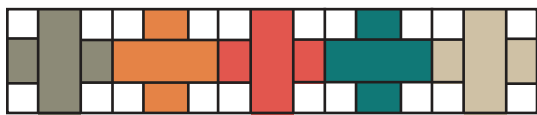
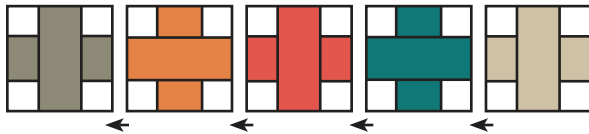
Make four.

Assemble five Lattice Blocks.

Pay close attention to block placement.

Lattice Row Two should measure 10" x 48".

Make three.

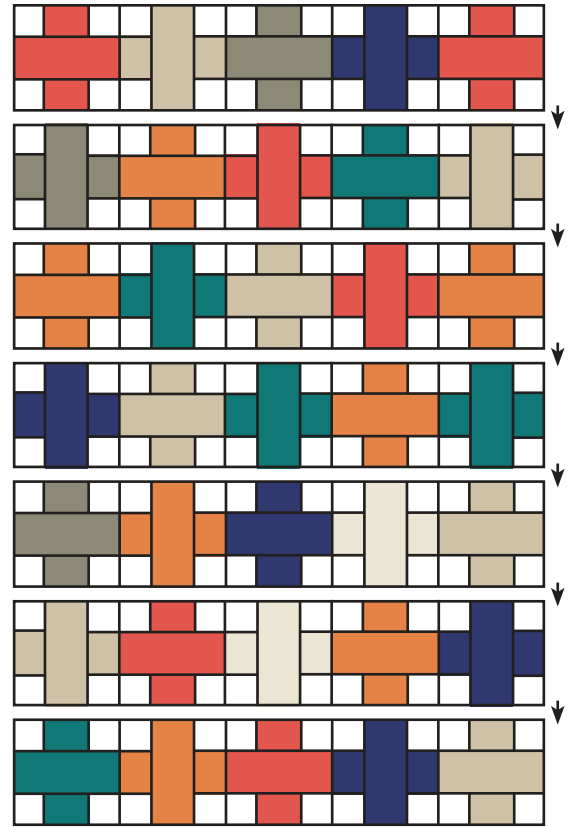


Make three.

Quilt Center

Assemble the Quilt Center.

Quilt Center should measure 48" x 67".



Finishing

Piece the Fabric D strips end to end for binding.

Quilt and bind as desired.

Layer Cake Lattice Sizing Guide

Follow the block instructions for the original Layer Cake Lattice pattern. This reference guide will assist in making it in different sizes.

Crib Quilt

Finished Size: 38 1/2" x 48"

Fabric Requirements:

1 Layer Cake or twenty 10" squares

7/8 yard solid fabric

1/2 yard binding

2 2/3 yards backing

Cutting:

Cut each 10" print square into:

1 - 4 1/2" x 10" rectangle - 20 total (Fabric A)

1 - 4 1/2" x 6 1/2" rectangle - 20 total (Fabric B)

Cut solid fabric into:

40 - 3 1/4" x 6 1/2" rectangles (Fabric C)

Cut binding fabric into:

6 - 2 1/2" x width of fabric strips (Fabric D)

Instructions:

Make twenty Lattice Strip Sets. Cut the Lattice Strip Sets into forty Side Lattice Units.

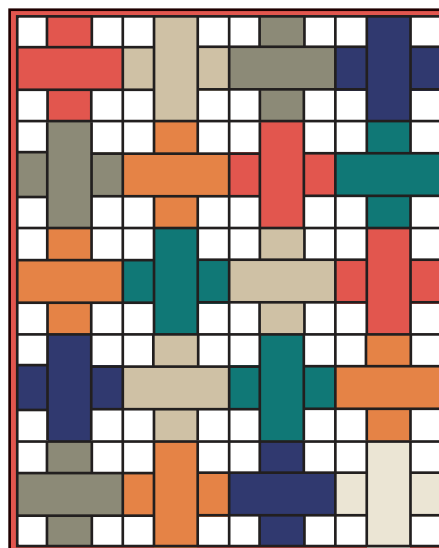
Make twenty Lattice Blocks.

Assemble four Lattice Blocks. Pay close attention to block placement.

Make three Lattice Row Ones.

Assemble four Lattice Blocks. Pay close attention to block placement.

Make two Lattice Row Twos.



Lap Quilt

Refer to Layer Cake Lattice pattern for Lap Quilt.

Check out our
YouTube tutorial

1-866-826-2069

www.FatQuarterShop.com

www.YouTube.com/FatQuarterShop

Copyright 2016 Fat Quarter Shop, LLC. All rights reserved. Duplication of any kind is prohibited.

This pattern may be used for personal purposes only and may not be reproduced without the express written permission from the Fat Quarter Shop.

These patterns may not be used for commercial purposes.



Layer Cake Lattice Sizing Guide

Twin Bed Quilt

Finished Size: 67" x 86"

Fabric Requirements:

2 Layer Cakes or sixty-three 10" squares

2 1/8 yards solid fabric

7/8 yard binding

5 1/2 yards backing

Cutting:

Cut each 10" print square into:

1 - 4 1/2" x 10" rectangle - 63 total (Fabric A)

1 - 4 1/2" x 6 1/2" rectangle - 63 total (Fabric B)

Cut solid fabric into:

126 - 3 1/4" x 6 1/2" rectangles (Fabric C)

Cut binding fabric into:

9 - 2 1/2" x width of fabric strips (Fabric D)

Instructions:

Make sixty-three Lattice Strip Sets. Cut the Lattice Strip Sets into one hundred twenty-six Side Lattice Units.

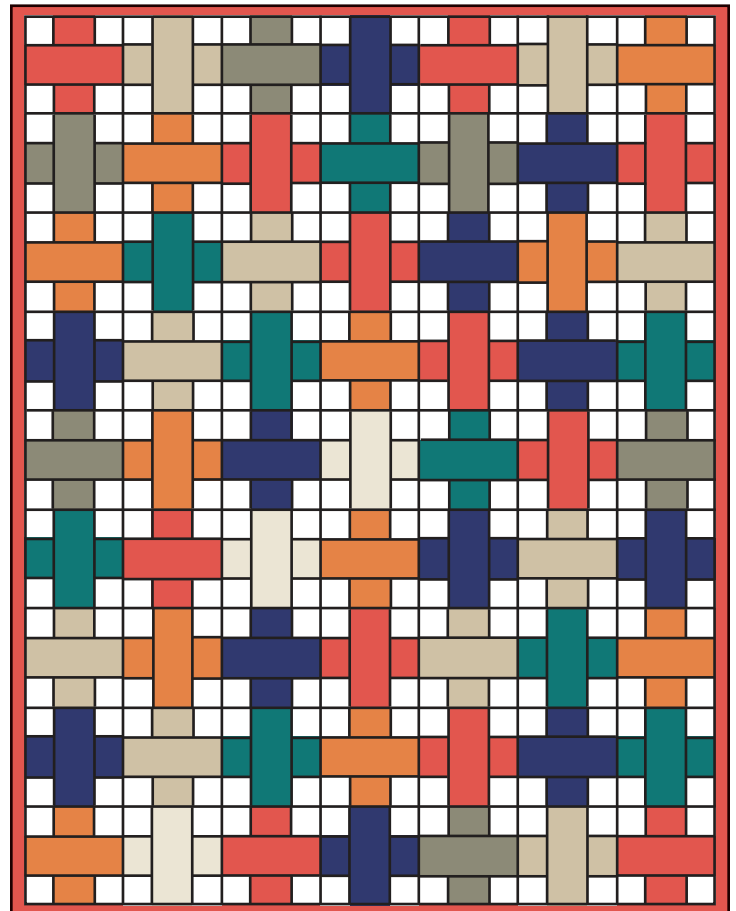
Make sixty-three Lattice Blocks.

Assemble seven Lattice Blocks. Pay close attention to block placement.

Make five Lattice Row Ones.

Assemble seven Lattice Blocks. Pay close attention to block placement.

Make four Lattice Row Twos.



Layer Cake Lattice Sizing Guide

Queen Bed Quilt

Finished Size: 95 ½" x 95 ½"

Fabric Requirements:

3 Layer Cakes or one hundred 10" squares

3 ½ yards solid fabric

1 yard binding

8 ⅞ yards backing

Cutting:

Cut each 10" print square into:

1 - 4 ½" x 10" rectangle - 100 total (Fabric A)

1 - 4 ½" x 6 ½" rectangle - 100 total (Fabric B)

Cut solid fabric into:

200 - 3 ¼" x 6 ½" rectangles (Fabric C)

Cut binding fabric into:

11 - 2 ½" x width of fabric strips (Fabric D)

Instructions:

Make one hundred Lattice Strip Sets. Cut the Lattice Strip Sets into two hundred Side Lattice Units.

Make one hundred Lattice Blocks.

Assemble ten Lattice Blocks. Pay close attention to block placement.

Make five Lattice Row Ones.

Assemble ten Lattice Blocks. Pay close attention to block placement.

Make five Lattice Row Twos.

