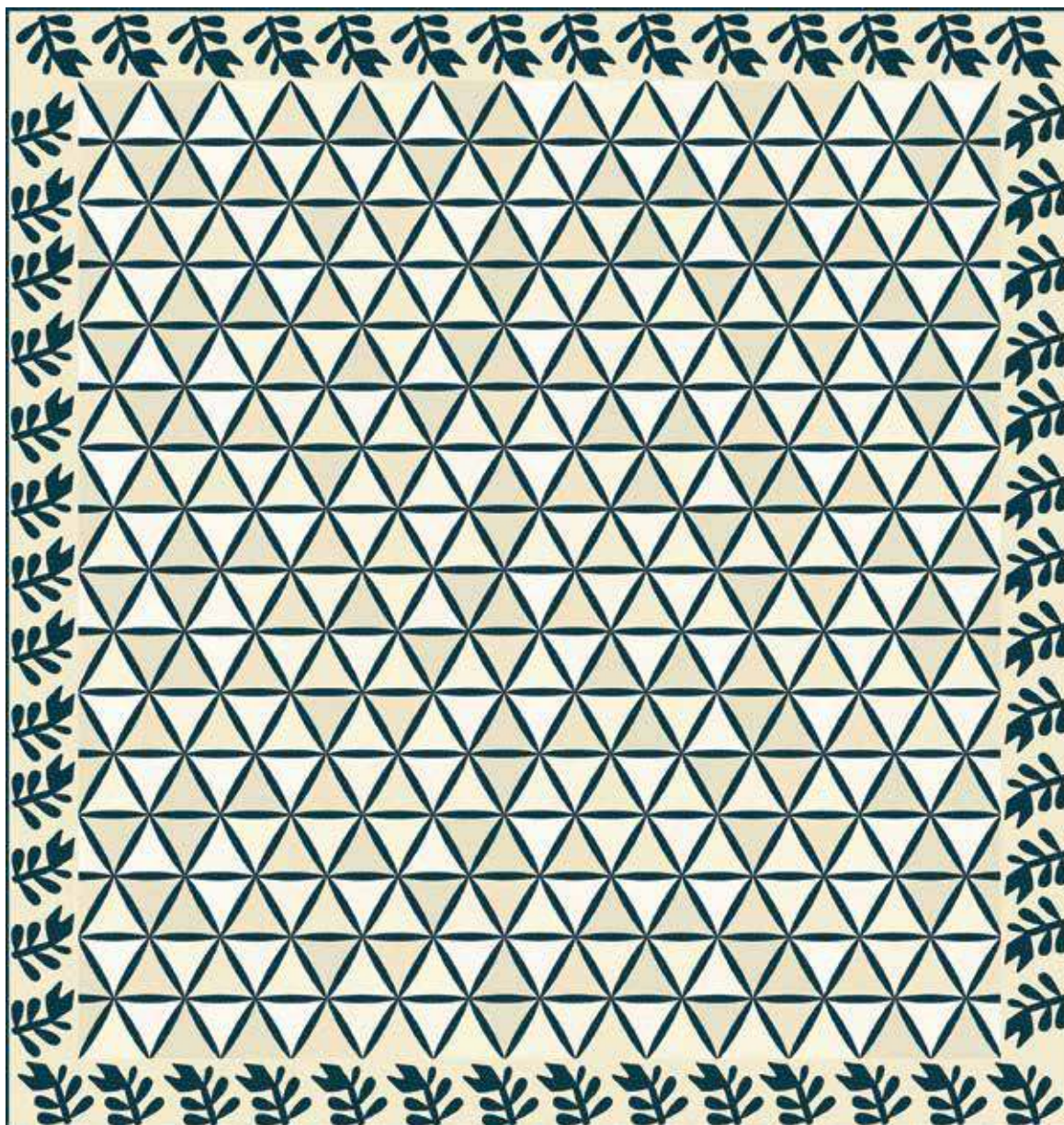


Buttercream

KATHY HALL



Vintage Tulips

Quilt designed by:

Kathy Hall

Quilt Size: 91 1/4" x 96"

andoverfabrics.com

About Buttercream

Just like a quilt top, the sweetest part of any baked treat is the top! Decorate your next delicious quilt in shades of creamy custards with Kathy Hall's Buttercream collection.

andover • makower.uk

Free Pattern Download Available

1384 Broadway New York, NY 10018

Tel. (800) 223-5678 • andoverfabrics.com

Vintage Tulips



Featuring Andover's new Collection: Buttercream by Kathy Hall

Quilt designed by Kathy Hall

Quilt finished 91 1/4" x 96"

Cutting Directions

Note: Read assembly directions before cutting patches. Borders are cut to exact length required plus 1/4" seam allowance. WOF designates the width of fabric from selvedge to selvedge (approximately 42" wide).

Fabric A	Cut (16) Template 1 triangles. Cut (8) Template 2 triangles.
Fabric B	Cut (24) Template 1 triangles.
Fabric C	Cut (24) Template 1 triangles.
Fabric D	Cut (32) Template 1 triangles.
Fabric E	Cut (12) Template 1 triangles. Cut (8) Template 3 triangles.
Fabric F	Cut (36) Template 1 triangles.
Fabric G	Cut (36) Template 1 triangles.
Fabric H	Cut (36) Template 1 triangles. Cut (8) Template 2 triangles.
Fabric I	Cut (32) Template 1 triangles.
Fabric J	Cut (24) Template 1 triangles.
Fabric K	Cut (4) 6 1/2" x WOF strips. Sew the strips together end to end with diagonal seams, trim the seams to 1/4" and cut a (2) 6 1/2" x 84 5/8" strips. Cut (5) 6 1/2" x WOF strips. Sew the strips together end to end with diagonal seams, trim the seams to 1/4" and cut (2) 6 1/2" x 91 3/4" strips.
Fabric L	Cut (24) Template 1 triangles.
Fabric M	Cut (24) Template 1 triangles. Cut (8) Template 3 triangles.

Fabric Requirements

		Yardage	Fabric
Fabric A	blocks	5/8 yard	9300-L2
Fabric B	blocks	5/8 yard	9301-L
Fabric C	blocks	5/8 yard	9302-L2
Fabric D	blocks	3/4 yard	9303-L1
Fabric E	blocks	1/2 yard	9304-L
Fabric F	blocks	3/4 yard	9305-L1
Fabric G	blocks	3/4 yard	9306-L
Fabric H	blocks	7/8 yard	9307-L
Fabric I	blocks	3/4 yard	9308-L
Fabric J	blocks	5/8 yard	9309-L1
Fabric K	border	2 yards	9310-L
Fabric L	blocks	5/8 yard	9311-L
Fabric M	blocks	5/8 yard	9312-L
Fabric N	blocks	5/8 yard	9313-L
Fabric O	blocks	5/8 yard	9314-L
Fabric P	blocks	5/8 yard	9315-L
Fabric Q	blocks	4 1/2 yards	9021-B
Fabric R	binding	7/8 yard	9016-B
Backing		8 1/2 yards	9300-L2

Fabric N	Cut (28) Template 1 triangles.
Fabric O	Cut (28) Template 1 triangles.
Fabric P	Cut (24) Template 1 triangles.
Fabric Q	See instructions to cut (54) Tulips. See instructions to cut (603) Petals. See instructions to cut (16) Half Petals.
Fabric R	Cut (10) 2 1/2" x WOF strips for the binding.
Backing	Cut (3) 100" x WOF strips. Sew the strips together and trim to make (1) 100" x 104" backing.

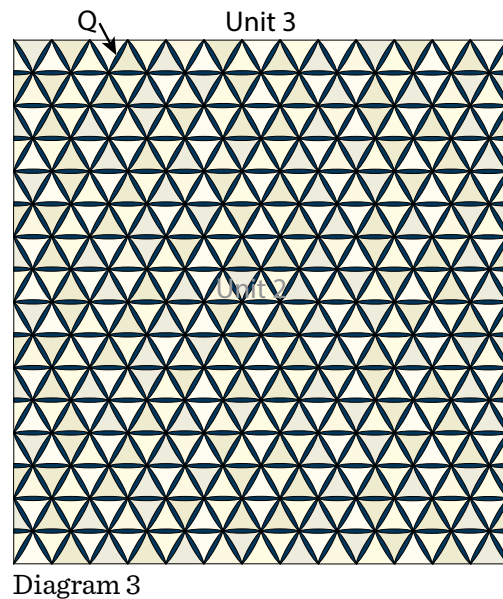
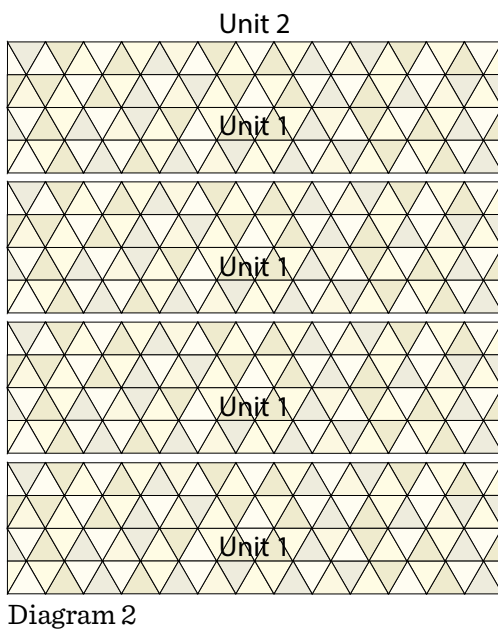
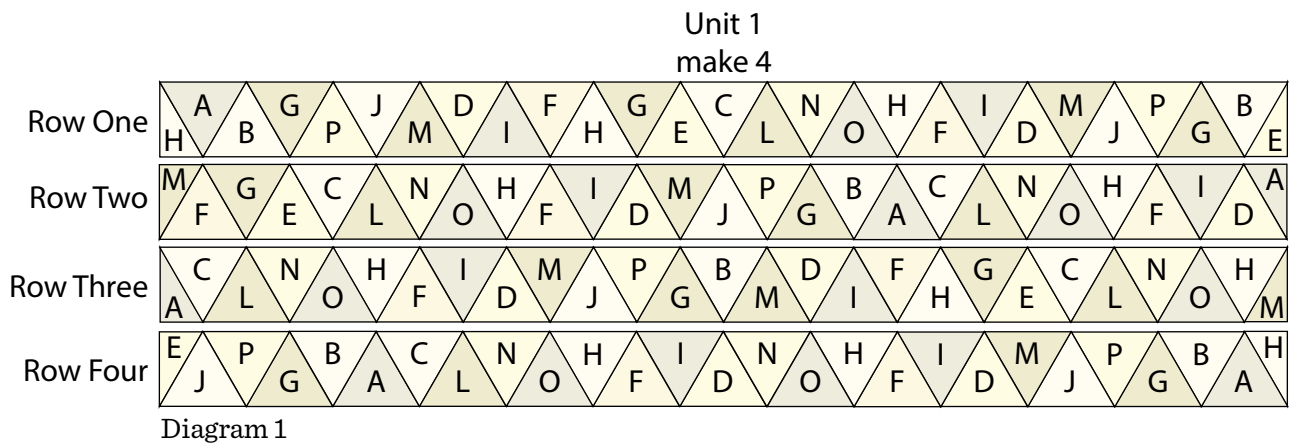
Making the Quilt

1. Block Assembly

Follow Diagram 1 and sew together (1) Fabric H-Template 2 triangle, (25) assorted Template 1 triangles and (1) Fabric E-Template 3 triangle to make Row One.

Vintage Tulips

2. Follow Diagram 1 and sew together (1) Fabric M-Template 3 triangle, (25) assorted Template 1 triangles and (1) Fabric A-Template 2 triangle to make Row Two.
3. Follow Diagram 1 and sew together (1) Fabric A-Template 2 triangle, (25) assorted Template 1 triangles and (1) Fabric M-Template 3 triangle to make the Row Three.
4. Follow Diagram 1 and sew together (1) Fabric E-Template 3 triangle, (25) assorted Template 1 triangles and (1) Fabric H-Template 2 triangle to make Row Four.
5. Sew the (4) rows from Steps 1-4 together to make (1) Unit 1 rectangle (Diagram 1).
6. Repeat Steps 1-5 to make (4) Unit 1 rectangles total.
7. Sew the (4) Unit 1 rectangles together lengthwise to make (1) Unit 2 rectangle (Diagram 2).
8. Following the manufacturer's instructions, trace the listed number of each template onto the paper side of the fusible web. Roughly cut out each template about 1/8" outside the drawn lines.
9. Press each template onto the wrong side of the fabrics as listed on the templates. Cut out each template on the drawn lines.
10. Refer to Diagram 3 to arrange and press the (603) petals and (16) half petals onto the Unit 2 rectangle.
11. Finish the raw edges of each shape with a decorative stitch such as a buttonhole or satin stitch to make (1) Unit 3 block (Diagram 3).



Vintage Tulips

12. Repeat Steps 10-11, refer to Diagram 4 and use (13) tulips and (1) $6\frac{1}{2}$ " x $84\frac{5}{8}$ " Fabric K strip to make (1) Side Border. Repeat to make a second Side Border.

13. Repeat Steps 10-11, refer to Diagram 5 and use (14) tulips and (1) $6\frac{1}{2}$ " x $91\frac{3}{4}$ " Fabric K strip to make the Top Border. Repeat to make the Bottom Border.

Side Border
make 2



Diagram 4

Quilt Top Assembly

(Refer to the Quilt Layout when assembling the quilt top.)

- 14.** Sew (1) Side Border to each side of the Unit 3 block.
- 15.** Sew the Top and Bottom Borders to the top and to the bottom of the Unit 3 block to make the quilt top.

Finishing the Quilt

- 16.** Layer and quilt as desired.
- 17.** Sew the (10) Fabric R binding strips together, end to end with a 45° seams, to make the binding. Fold this long strip in half lengthwise with wrong sides together and press.
- 18.** Bind as desired.

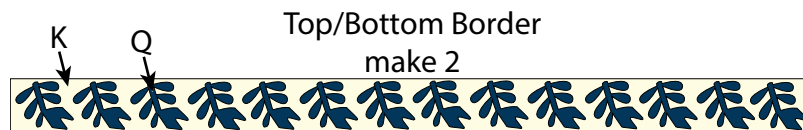
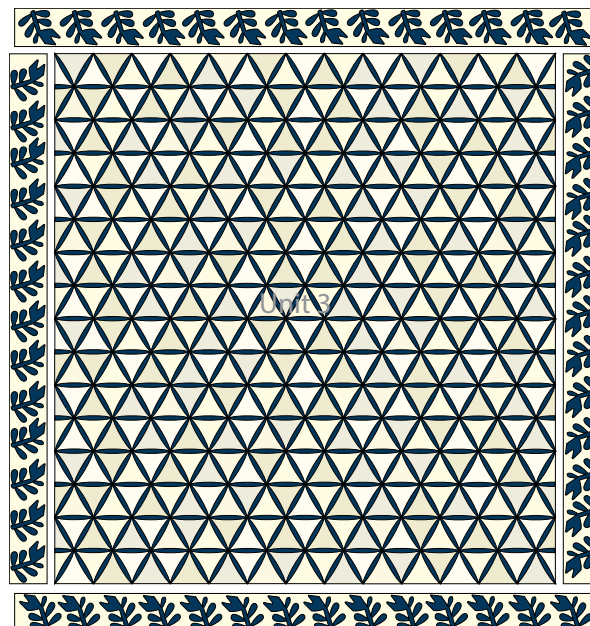


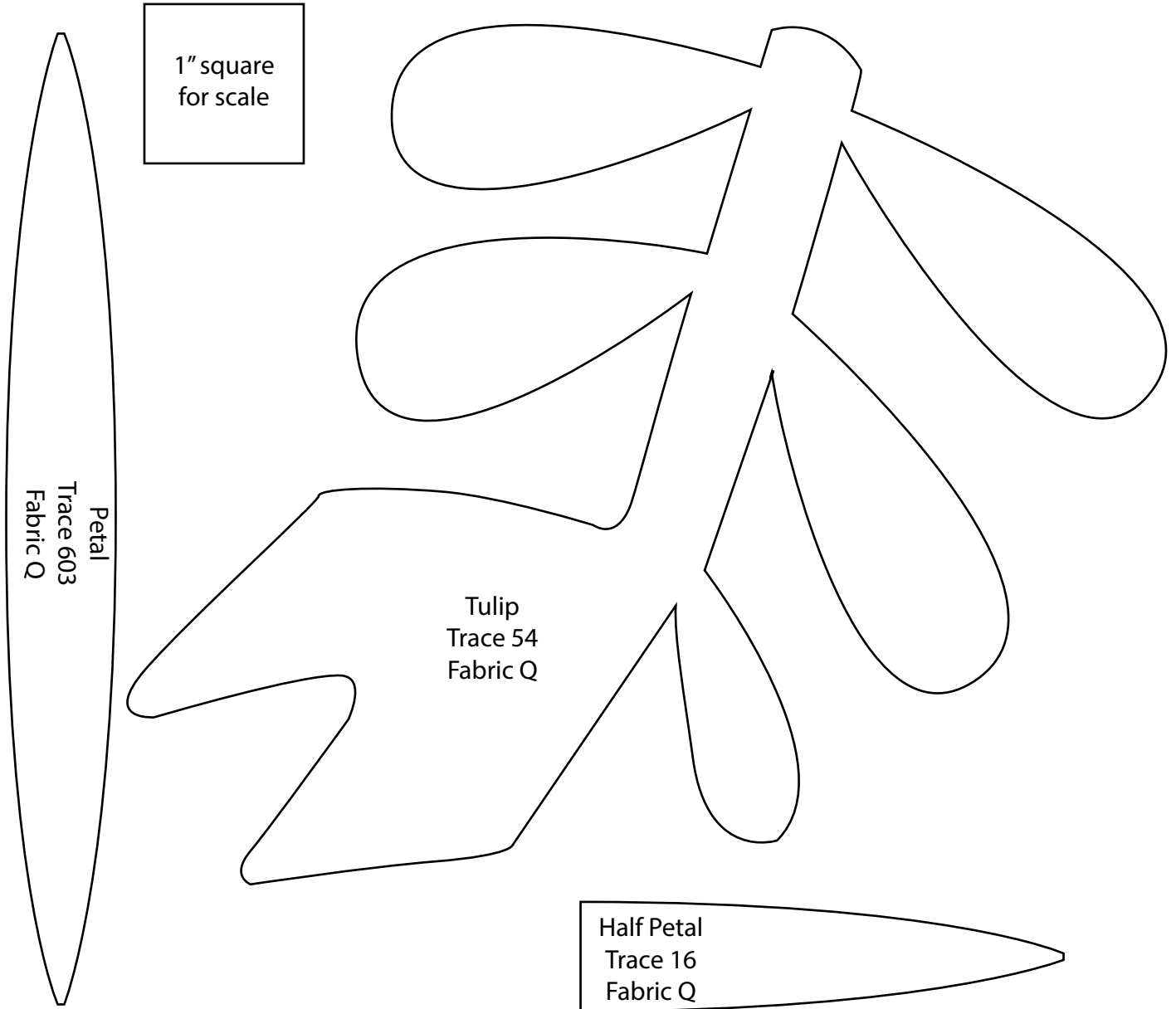
Diagram 5



Quilt Layout

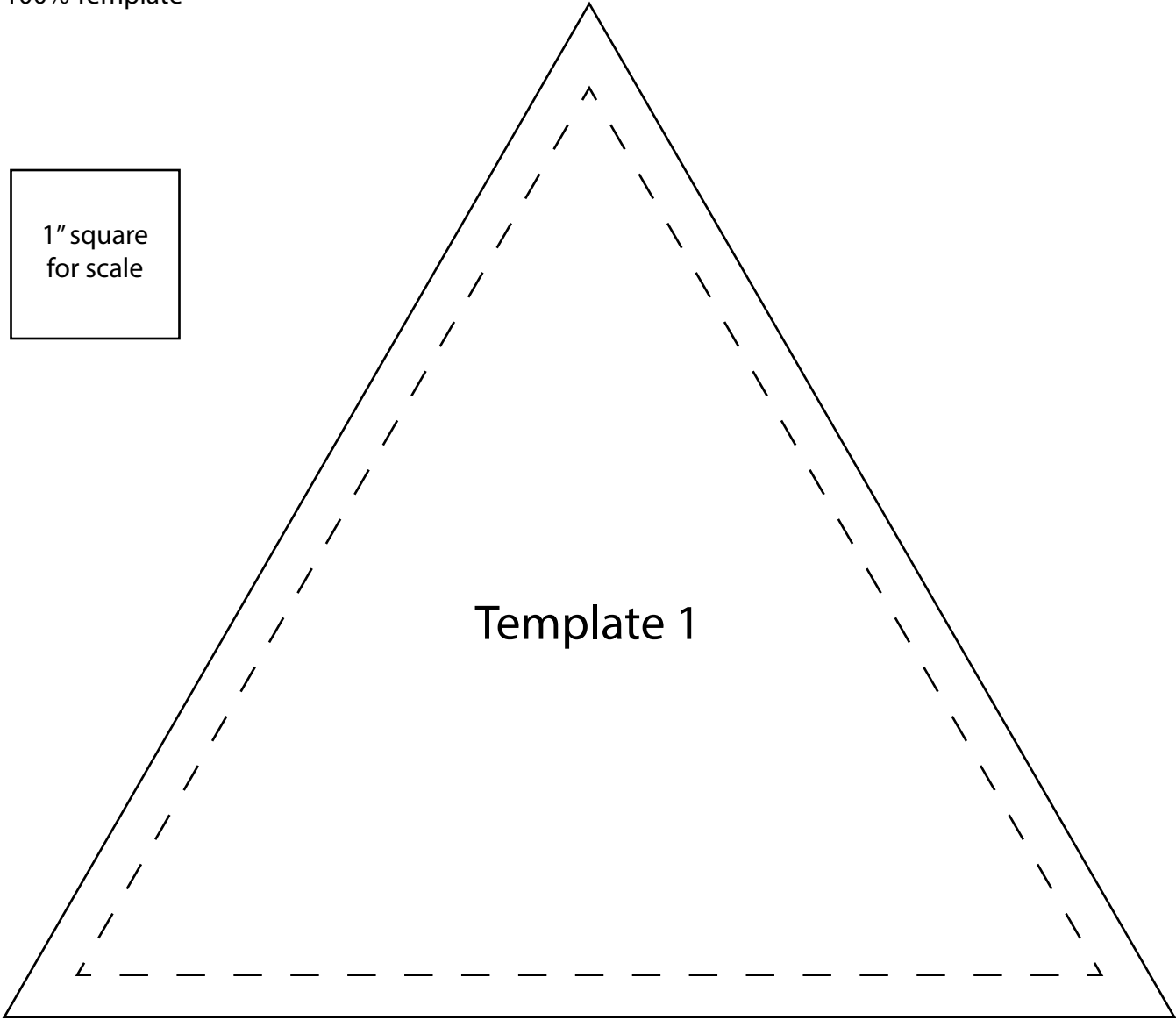
Vintage Tulips

Reversed 100% Templates



Vintage Tulips

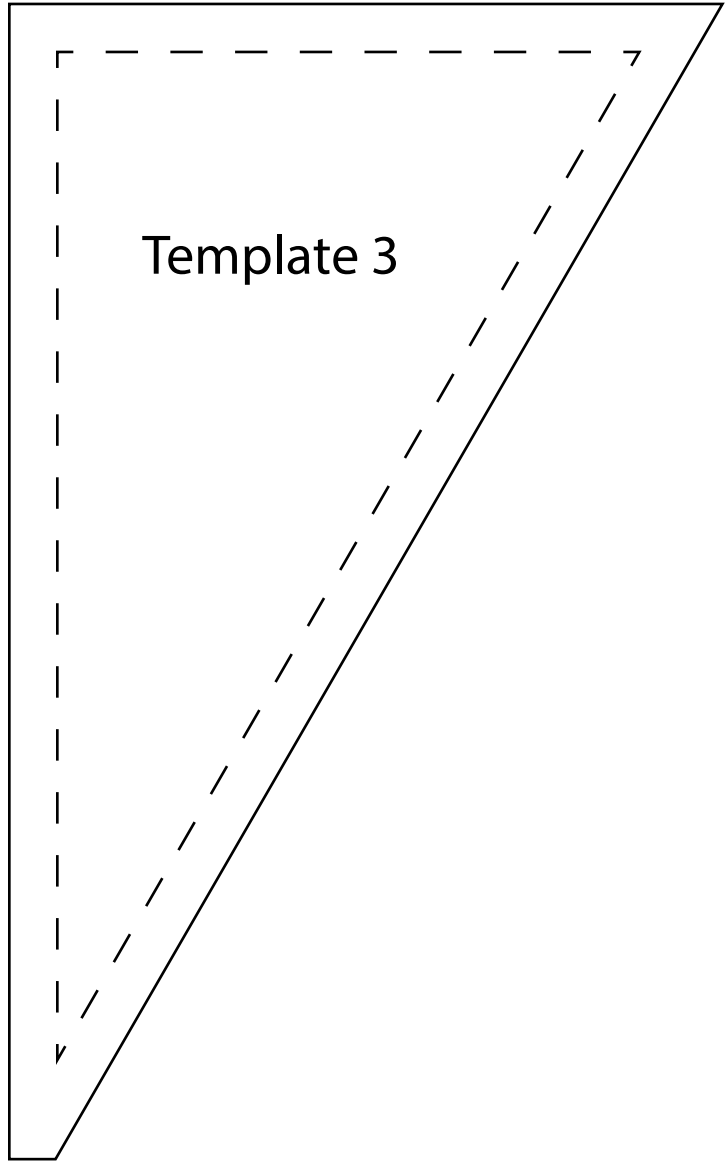
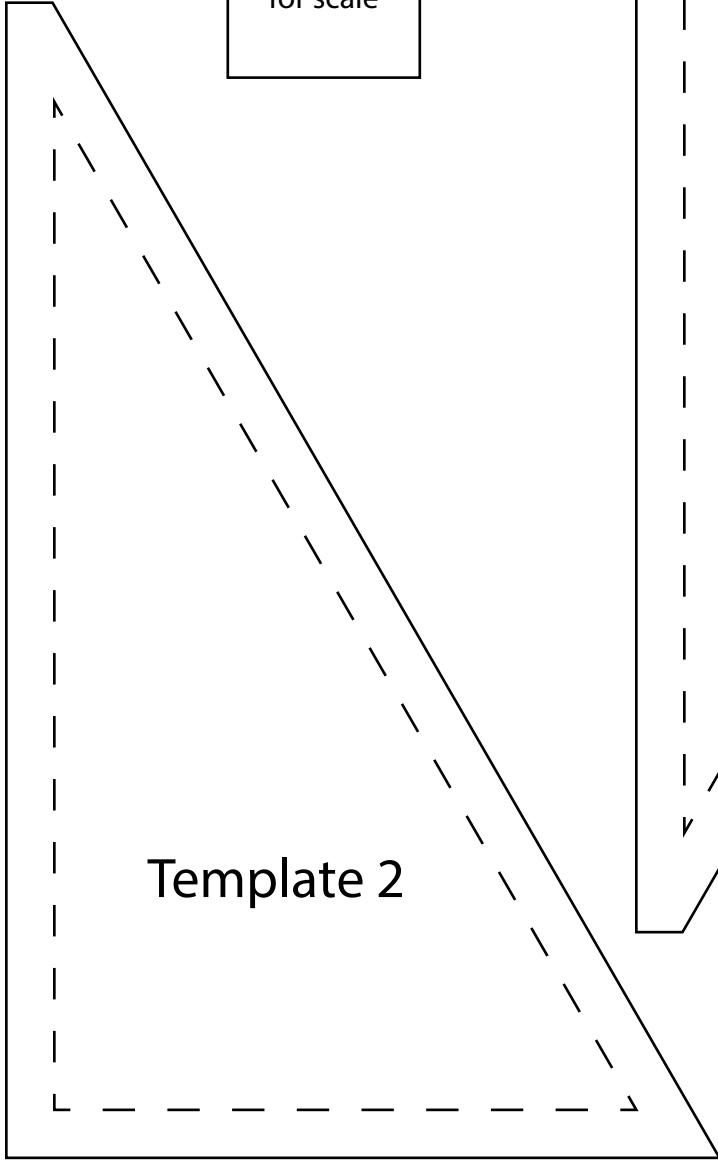
100% Template



Vintage Tulips

100% Templates

1" square
for scale



Buttercream

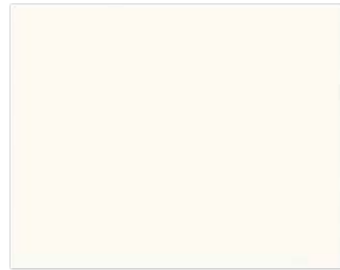
KATHY HALL



9300-L2 9 1/8 yds
(includes backing)



9301-L 5/8 yd



9302-L2 5/8 yd



9303-L1 3/4 yd



9304-L 1/2 yd



9305-L1 3/4 yd



9306-L 3/4 yd



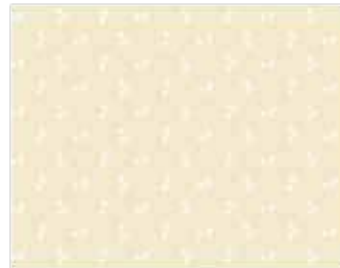
9307-L 7/8 yd



9308-L 3/4 yd



9309-L1 5/8 yd



9310-L 2 yds



9311-L 5/8 yd



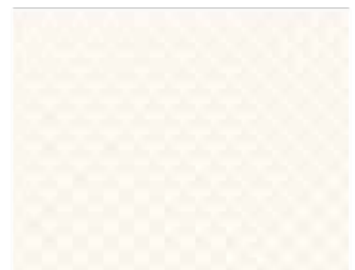
9312-L 5/8 yd



9313-L 5/8 yd



9314-L 5/8 yd



9315-L 5/8 yd

*Blend with fabrics
from 2020 Trinkets by
Andover Fabrics*



9016-B 7/8 yd
(includes binding)



9021-B 4 1/2 yds

About Our Fabrics

A recognized leader in the quilting industry, Andover Fabrics features designs by a wide variety of talented artists and licenses, including Downton Abbey and Eric Carle's Very Hungry Caterpillar. Catering to the tastes of creative and dedicated quilters, Andover has a style for everyone — authentic reproductions, romantic florals, modern and more.

Fabrics shown are 25% of actual size.

andover • makower.uk

Free Pattern Download Available

1384 Broadway New York, NY 10018
Tel. (800) 223-5678 • andoverfabrics.com